

Product Details

This product is derived from Streptococcus pyogenes and expressed in E. coli, it is an IgG-specific cysteine protease that digests antibodies at a single amino acid site below the hinge, generating homogenous F(ab')₂ and Fc fragments.

Application

IdeS cleaves IgG to produce F(ab')₂ and Fc fragments at specific site.

Unit Definition

One unit digests ≥ 95% of 1 μg human IgG when incubated in 10 mM sodium phosphate, 137 mM NaCl, 2.7 mM KCl, pH7.4 at 37°C for 30min.

Purity

>95% as determined by SDS-PAGE.

Enzyme Activity

>70 U/μL

Endotoxin

Less than 1.0 EU per μg by the LAL method / rFC method.

Formulation

Lyophilized from 0.22 μm filtered solution in 50 mM Tris, 150 mM NaCl, PH7.5 with trehalose as protectant.

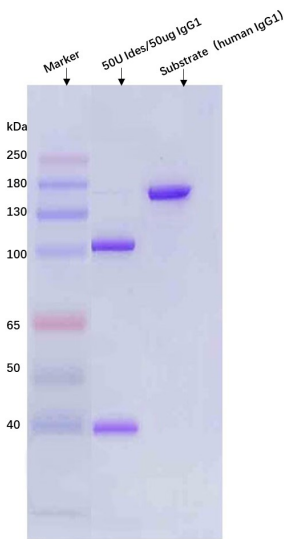
Contact us for customized product form or formulation.

Storage

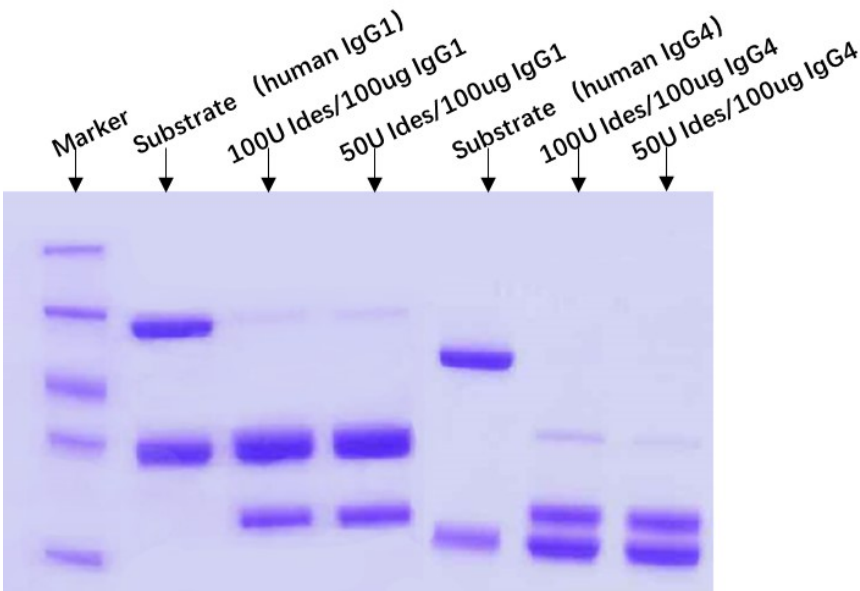
This product is stable after storage at:

- 20°C to -70°C for 12 months in lyophilized state;
- 70°C for 3 months under sterile conditions after reconstitution.

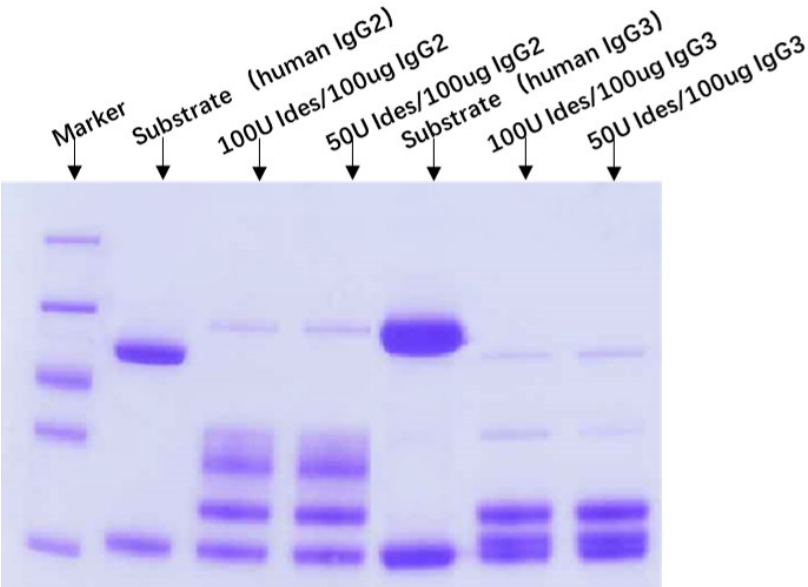
Bioactivity



Bioactivity of IdeS is confirmed by the cleavage of Human IgG as analyzed by SDS-PAGE (QC tested).



50/100unit Ides digests ≥ 95% of 100 μg human IgG when incubated in PBS pH 7.4 at 37°C for 30min (Routinely tested).



Discounts, Gifts,
and more!



