

Cynomolgus Complement C5 Protein, His Tag

Catalog # CO5-C52Hx



Synonym

Complement C5,C5,CPAMD4

Source

Cynomolgus Complement C5, His Tag(CO5-C52Hx) is expressed from human 293 cells (HEK293). It contains AA Gln 19 - Cys 1676 (Accession # [XP_005580972.1](#)).
Predicted N-terminus: Gln 19 (β chain) & Met 678 (α chain)

Molecular Characterization

Complement C5(Gln 19 - Cys 1676) XP_005580972.1	Poly-his
--	----------

This protein carries a polyhistidine tag at the C-terminus.The mature form of Complement C5 is a disulfide-linked heterodimer composed of proteolytically cleaved α and β chain. Each α and β chain has a calculated MW of 73.9 kDa (β chain) and 114.9 kDa (α chain). The protein migrates as 65 kDa and 113 kDa when calibrated against [Star Ribbon Pre-stained Protein Marker](#) under reducing (R) condition (SDS-PAGE) due to glycosylation.

Endotoxin

Less than 1.0 EU per µg by the LAL method / rFC method.

Purity

>95% as determined by SDS-PAGE.

Formulation

Lyophilized from 0.22 µm filtered solution in PBS, pH7.4 with trehalose as protectant.
Contact us for customized product form or formulation.

Reconstitution

Please see Certificate of Analysis for specific instructions.
For best performance, we strongly recommend you to follow the reconstitution protocol provided in the CoA.

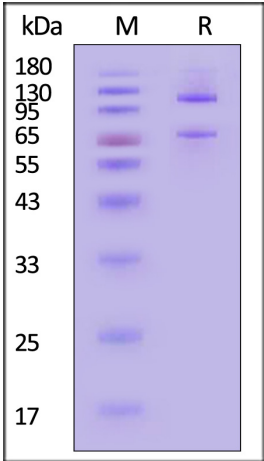
Storage

For long term storage, the product should be stored at lyophilized state at -20°C or lower.
Please avoid repeated freeze-thaw cycles.

This product is stable after storage at:

- 20°C to -70°C for 12 months in lyophilized state;
- 70°C for 3 months under sterile conditions after reconstitution.

SDS-PAGE



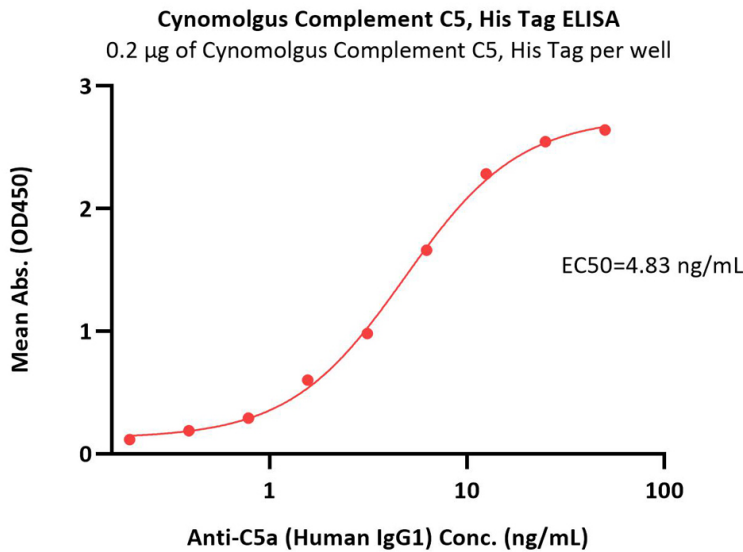
Cynomolgus Complement C5, His Tag on SDS-PAGE under reducing (R) condition. The gel was stained with Coomassie Blue. The purity of the protein is greater than 95% (With [Star Ribbon Pre-stained Protein Marker](#)).

Bioactivity-ELISA

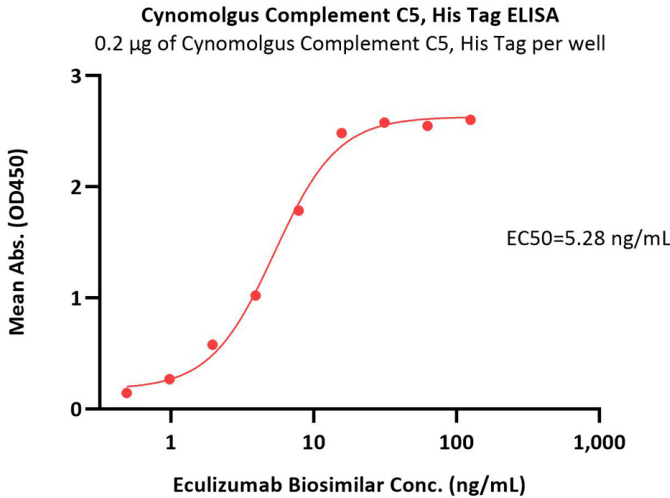


Cynomolgus Complement C5 Protein, His Tag

Catalog # CO5-C52Hx



Immobilized Cynomolgus Complement C5, His Tag (Cat. No. CO5-C52Hx) at 2 µg/mL (100 µL/well) can bind Anti-C5a (Human IgG1) with a linear range of 0.4-6 ng/mL (QC tested).



Immobilized Cynomolgus Complement C5, His Tag (Cat. No. CO5-C52Hx) at 2 µg/mL (100 µL/well) can bind Eculizumab Biosimilar with a linear range of 0.5-31 ng/mL (Routinely tested).

Background

Derived from proteolytic degradation of complement C5, C5 anaphylatoxin is a mediator of local inflammatory process. C5 precursor is first processed by the removal of 4 basic residues, forming two chains, beta and alpha, linked by a disulfide bond. C5 convertase activates C5 by cleaving the alpha chain, releasing C5a anaphylatoxin and generating C5b (beta chain + alpha' chain). Activation of C5 by a C5 convertase initiates the spontaneous assembly of the late complement components, C5-C9, into the membrane attack complex. C5b has a transient binding site for C6. The C5b-C6 complex is the foundation upon which the lytic complex is assembled. The C5a anaphylatoxin interacts with C5AR1 and tick complement inhibitor. C5a is also a potent chemokine which stimulates the locomotion of polymorphonuclear leukocytes and directs their migration toward sites of inflammation.

Discounts, Gifts,
and more!

